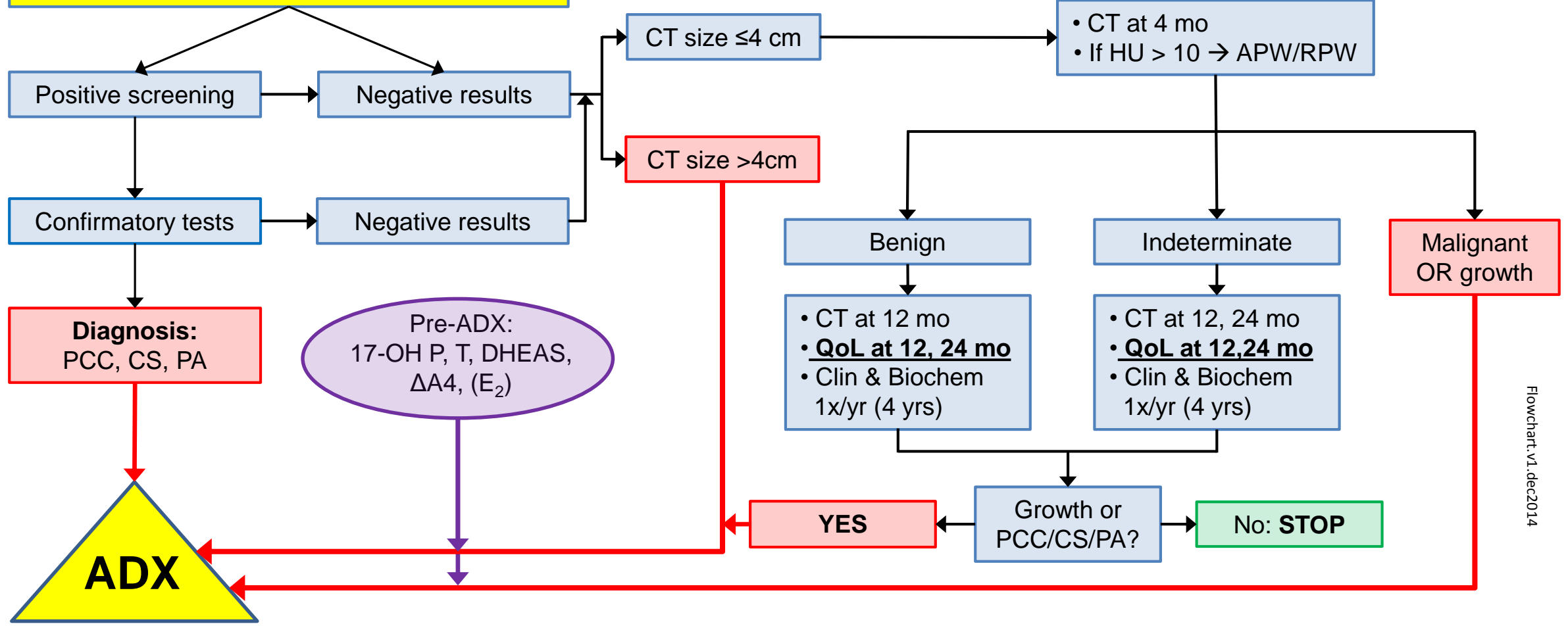


# SERENDIPITY FLOWCHART

- Adrenal incidentaloma**
- Clinical evaluation
  - Biochemical tests:
    - Hb, Ht, creat, Na, K, glucose, lipids
    - MN (*in plasma or 24h urine*)
    - ARR (*only in hypertensives*)
    - 24h urine: creat, **USP**
    - 1 mg DST (*after 24h urine*)
  - QoL**



**Vragen/aanvullende informatie:**

E. Buitenwerf, arts-onderzoeker UMCG  
E-mailadres: e.buitenwerf@umcg.nl  
Telefoon: 050-3610973/06-55256161

**Inclusion criteria:**

- Discrete adrenal mass > 1 cm, incidentally discovered
- Age  $\geq$  18 years

**Exclusion criteria:**

- Extra-adrenal malignancy (active or past history, except for BCC)
- Radiologic diagnosis simple cyst or bilateral adrenal masses
- Allergy to radiocontrast
- eGFR < 30 ml/min/1.73m<sup>2</sup>
- Pregnancy
- Inability to understand Dutch

**Legend:**

1 mg DST: 1 mg dexamethasone suppression test  
MN: (nor)metanephrines  
ARR: aldosterone/renin ratio  
PCC: pheochromocytoma  
CS: Cushings' syndrome  
PA: primary aldosteronism  
ADX: adrenalectomy  
mo: months  
yr: year  
HU: Houndsfield units  
USP: urinary steroid profile  
RPW: relative percentage wash-out  
APW: absolute percentage wash-out  
Clin&Biochem: Clinical evaluation&Biochemical tests  
17-OH P: 17-OH progesterone  
T: testosterone  
 $\Delta$ A4: androstenedione  
DHEAS: dehydroepiandrosterone sulphate  
E2: 17 $\beta$  estradiol

**CT-phenotype:**

- **Benign:** unenhanced density  $\leq$  10 HU AND largest diameter < 4 cm
- **Indeterminate:** unenhanced density >10 HU AND largest diameter 1- 4 cm AND RPW > 40%, APW > 60%
- **Malignant:** largest diameter  $\geq$  4 cm OR largest diameter 1 - 4 cm AND RPW < 40%, APW < 60%

*Note: largest diameter should be determined in transversal plane*